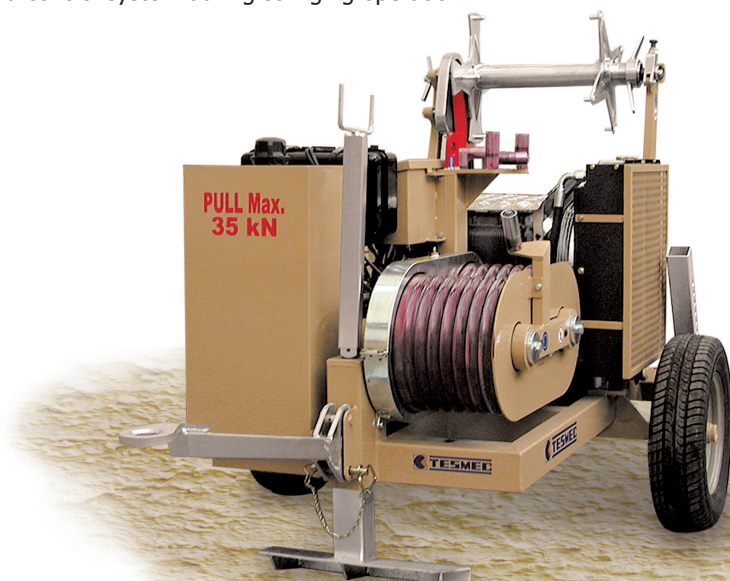


HYDRAULIC WINCH 35kN

Hydraulic winch suitable to string one wire rope. The bull-wheel grooves are made of heat treated steel.

Hydraulic transmission which allows continuous control of speed in both directions of rotation.

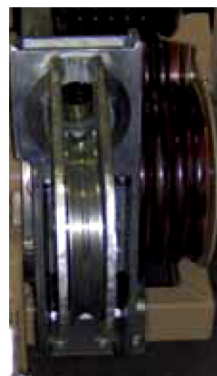
Programming and control system during stringing operation.



DLR300



ALL111



Configuration

- Negative self-acting hydraulic brake.
- Dynamometer with setting and automatic control of pulling.
- Hydraulic oil cooling system.
- Control instruments for hydraulic system and Diesel engine.
- Rigid axle for towing at max speed of 30km/h.
- On board reel winder with automatic level wind, suitable for standard reel mod. BOF010 and BOF020 (AXR001 included).
- Pre-equipped for electronic pull and speed recorder kit (recorder sold separately).
- Pull pre-setting system.
- Mechanical front stabiliser.
- Grounding connection point.

Performances

Pulling force max	35 kN
Speed at pulling max	1,2 km/h
Pulling speed max	3,6 km/h
Force at speed max	12 kN

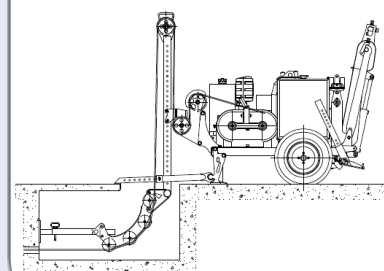
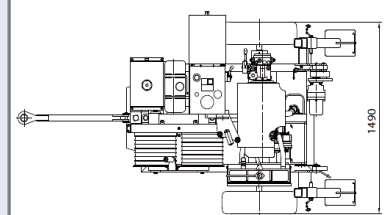
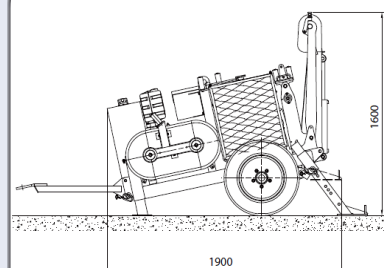
Performances of the basic machine is calculated at 20°C

Caractéristiques

Capstan pulley diameter	325 mm
Wire diameter max	13 mm
Dimensions L x l x h	1900 x 1490 x 1600 mm
Weight	980 kg

Moteur

Engine	Diesel, 4 cycles, water cooled
Power	25 kW (34 CH)
Starter	Electrical 12V



ALL110

Ref.	Accessories / options
TESM-ALL110	Underground cable pulling attachment
TESM-ALL111	Swivel guide rope roller
TESM-ALL112	Trailer for towing at max speed of 80km/h + parking brake + hook with Ø40mm eye + lighting system
TESM-AXR001	Extra shaft
TESM-DLR300	Electronic pull and speed recorder