

SUSPENSION AND ANCHORING LADDERS, ANTI-FALL

SUSPENSION LADDERS - SCS

Specifically designed for suspension works. The ladders are made of light aluminium alloy, fitted with anti-slippery rungs, with a special track for the anti-fall device and with a galvanized steel supporting hook.



Mod.	Length [m]	Sections length [m]	Working load [kg]	Linear mass [kg/m]	Anti-fall device (mod.) not included
SCS100	3.5	3.5	300	3.8	SDA021
SCS200	4.5	4.5	300	3.8	SDA021
SCS306	5	5	300	3.8	SDA021
SCS300	6	6	300	3.8	SDA021
SCS301	6	4+2	300	3.8	SDA021
SCS302	8	4+4	300	3.8	SDA021

Option available :

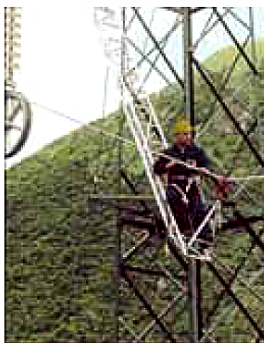
SDG015 - Double swivel hook

ANCHORING LADDERS - SCA

Specifically designed for anchoring works. The ladders are made of light aluminium alloy, with anti-slippery rungs and with galvanized steel suspension hooks.

The ladders are supplied with a supplementary swivel hook to be located on the conductor, which allows the ladders to be used in horizontal position.

The ladders are available with triangular or trapezoidal section.



Mod.	Length [m]	Sections length [m]	Working load [kg]	Linear mass [kg/m]	Section
SCA700	4	4	150	4	Triangular
SCA800	6	6	150	4	Triangular
SCA801	6	4+2	150	4	Triangular
SCA900	8	4+4	150	4	Triangular
SCA400	3.5	3.5	300	4.7	Trapezoidal
SCA401	4.5	4.5	300	4.7	Trapezoidal
SCA500	6.5	4.5+2	300	4.7	Trapezoidal
SCA600	8	4+4	300	4.7	Trapezoidal

Special models with different lengths are available on demand.

ANTI-FALL DEVICES - SDA

They are individual protective devices to prevent the operator from falling down.

They are self-guided and self-locking devices running on a special rigid track and made of light aluminium alloy.

They are provided with a polyamide mini energy-absorber and safety spring catch to connect it to the safety harness (model DPC080) the use of the safety harness is compulsory. They allow the proper movement of the operator along the ladder and, at the same time, they protect him from falling down. End stroke devices are provided in order to avoid that the anti-fall device run away from the anchoring track.

These devices comply with the 89/686/CEE European Standard related to the individual protective devices.



Mod.	Working load [kg]	Nylon rope length [mm]	Weight [kg]
SDA021	100	300	1
SDA022	100	300	1